

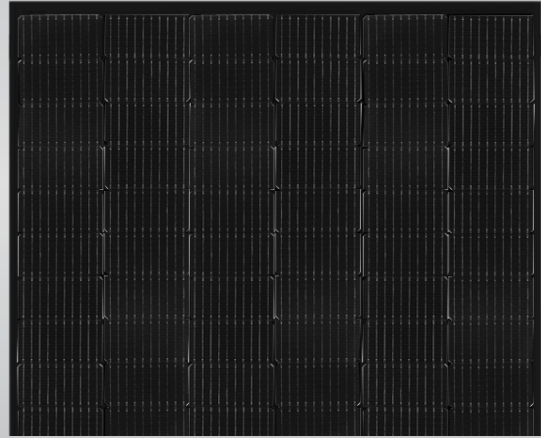
Tiger Mono-facial All Black 340-360 Watt

Tiling Ribbon (TR) Technology

Positive power tolerance of 0~+3%

ISO9001:2015, ISO14001:2015, ISO45001:2018 certified factory

IEC61215, IEC61730 certified product



KEY FEATURES



TR technology + Half Cell

TR technology with Half cell aims to eliminate the cell gap to increase module efficiency (mono-facial up to 20.68%)



Low Light Induced Degradation

The N-type cell shows extremely low light induced degradation (LID) performance when comparing with the P-type cell.



9BB instead of 5BB

9BB technology decreases the distance between bus bars and finger grid line which is benefit to power increase.



Higher lifetime Power Yield

1% first year degradation,
0.4% linear degradation



Best Warranty

25 year product warranty,
30 year linear power warranty

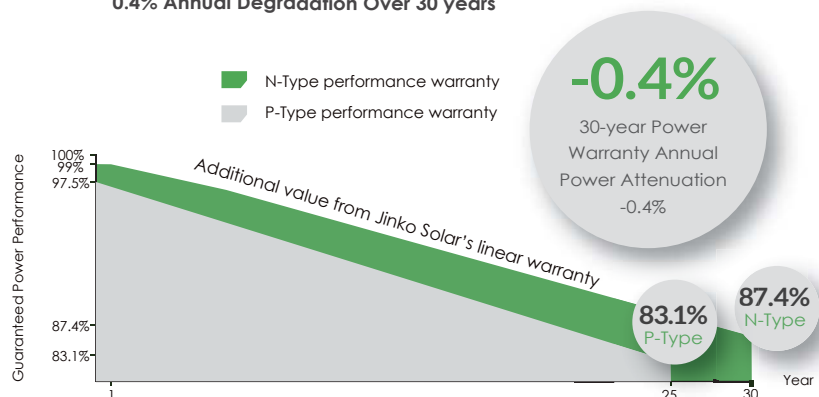


Better low-light performance

Excellent performance in low-light environments (e.g. early morning, dusk, and cloud, etc.)

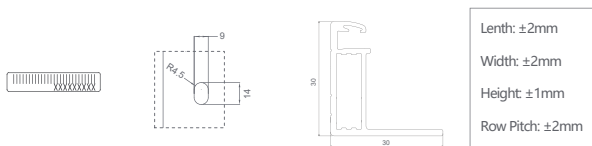
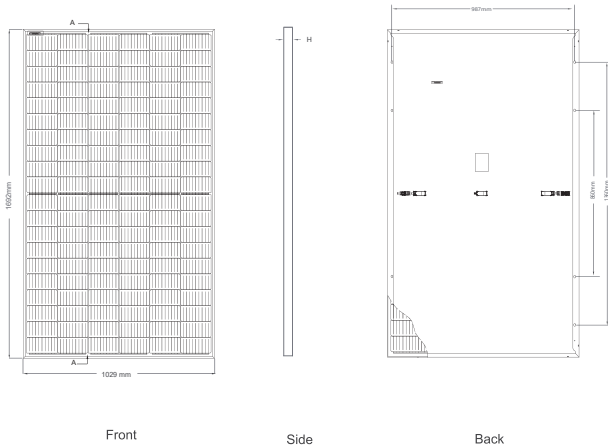
LINEAR PERFORMANCE WARRANTY

25 Year Product Warranty 30 Year Linear Power Warranty
0.4% Annual Degradation Over 30 years



Iris Hellas
Technology Innovations
www.irishellas.com

Engineering Drawings

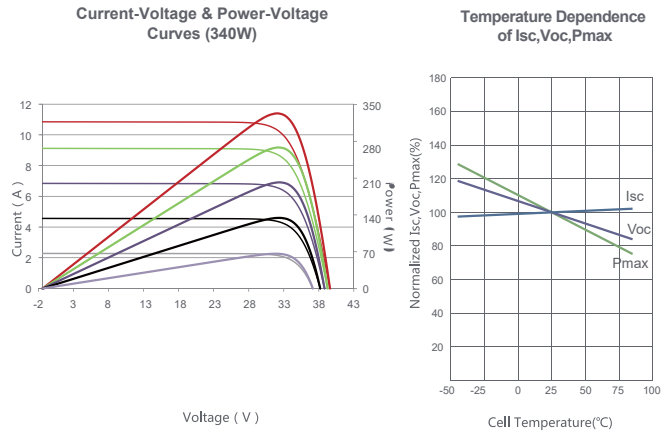


Packaging Configuration

(Two pallets = One stack)

35pcs/pallets, 70pcs/stack, 910pcs/ 40'HQ Container

Electrical Performance & Temperature Dependence



Mechanical Characteristics

Cell Type	N type Mono-crystalline
No. of cells	120 (2×60)
Dimensions	1692×1029×30mm (66.61×40.51×1.18 inch)
Weight	19.3 kg (42.55 lbs)
Front Glass	3.2mm, Anti-Reflection Coating, High Transmission, Low Iron, Tempered Glass
Frame	Anodized Aluminium Alloy
Junction Box	IP67 Rated
Output Cables	TUV 1×4.0mm ² (+): 290mm, (-): 145 mm or Customized Length

SPECIFICATIONS

Module Type	JKM340N-6TL3-B		JKM345N-6TL3-B		JKM350N-6TL3-B		JKM355N-6TL3-B		JKM360N-6TL3-B	
	STC	NOCT	STC	NOCT	STC	NOCT	STC	NOCT	STC	NOCT
Maximum Power (Pmax)	340Wp	254Wp	345Wp	257Wp	350Wp	261Wp	355Wp	265Wp	360Wp	268Wp
Maximum Power Voltage (Vmp)	33.50V	30.84V	33.60V	30.92V	33.75V	30.99V	33.91V	31.07V	34.06V	31.15V
Maximum Power Current (Imp)	10.15A	8.22A	10.27A	8.32A	10.37A	8.39A	10.47A	8.47A	10.57A	8.55A
Open-circuit Voltage (Voc)	40.07V	37.82V	40.17V	37.91V	40.32V	38.06V	40.48V	38.21V	40.63V	38.35V
Short-circuit Current (Isc)	10.86A	8.77A	10.98A	8.87A	11.08A	8.95A	11.18A	9.03A	11.28A	9.11A
Module Efficiency STC (%)	19.53%		19.82%		20.10%		20.39%		20.68%	
Operating Temperature(°C)	-40°C~+85°C									
Maximum system voltage	1000VDC (IEC)									
Maximum series fuse rating	20A									
Power tolerance	0~+3%									
Temperature coefficients of Pmax	-0.34%/°C									
Temperature coefficients of Voc	-0.28%/°C									
Temperature coefficients of Isc	0.048%/°C									
Nominal operating cell temperature (NOCT)	45±2°C									

* STC: Irradiance 1000W/m² Cell Temperature 25°C AM=1.5
 NOCT: Irradiance 800W/m² Ambient Temperature 20°C AM=1.5 Wind Speed 1m/s
 * Power measurement tolerance: ± 3%